

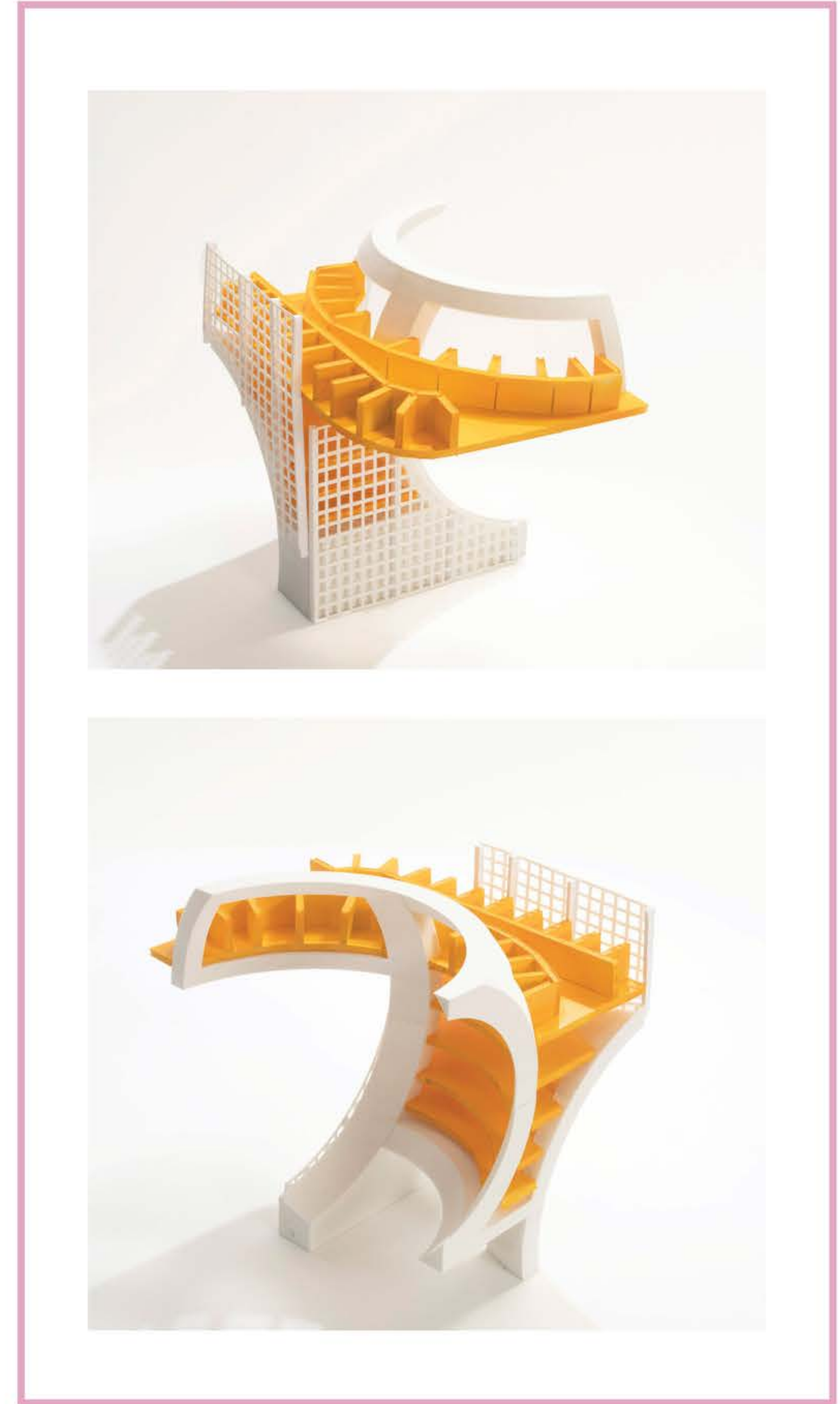
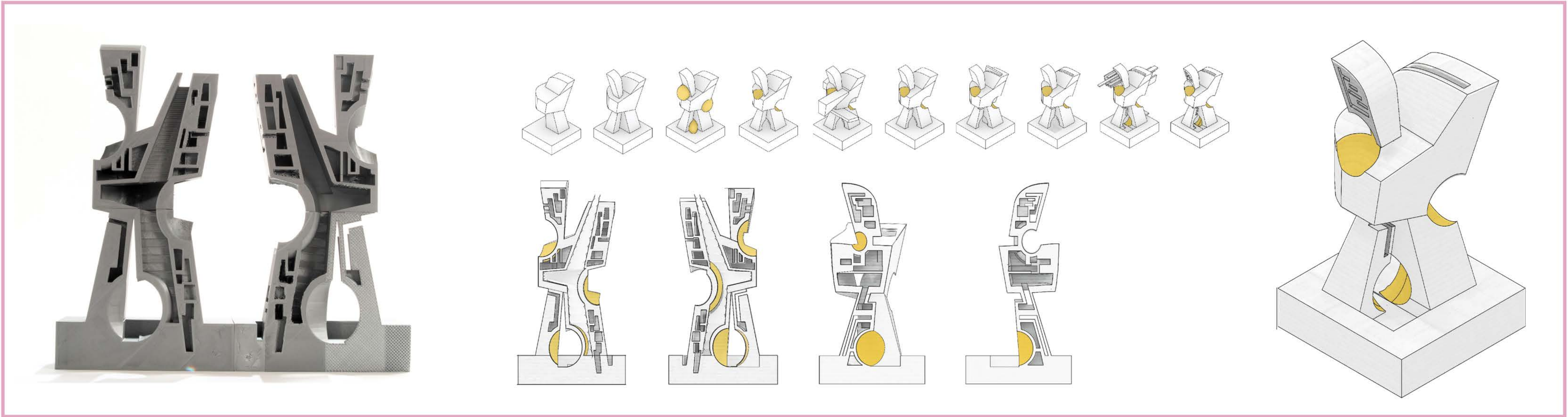
# globes gaps glues

## glued to macarthur park

macarthur park in los angeles is home to a variety of people from different backgrounds who interact with the park in unique ways, including physical activity and street vending. globes, gaps, and glues is an affordable housing and mixed use project that responds to those existing conditions. with the aim to give opportunity to the local vendors who currently sell products on the curb in front of the park, the projects creates a panoramic marketplace on the ground level. residents of the housing complex share several semi-spherical environments that help to spark community between people of both affordable and market-rate priced units.

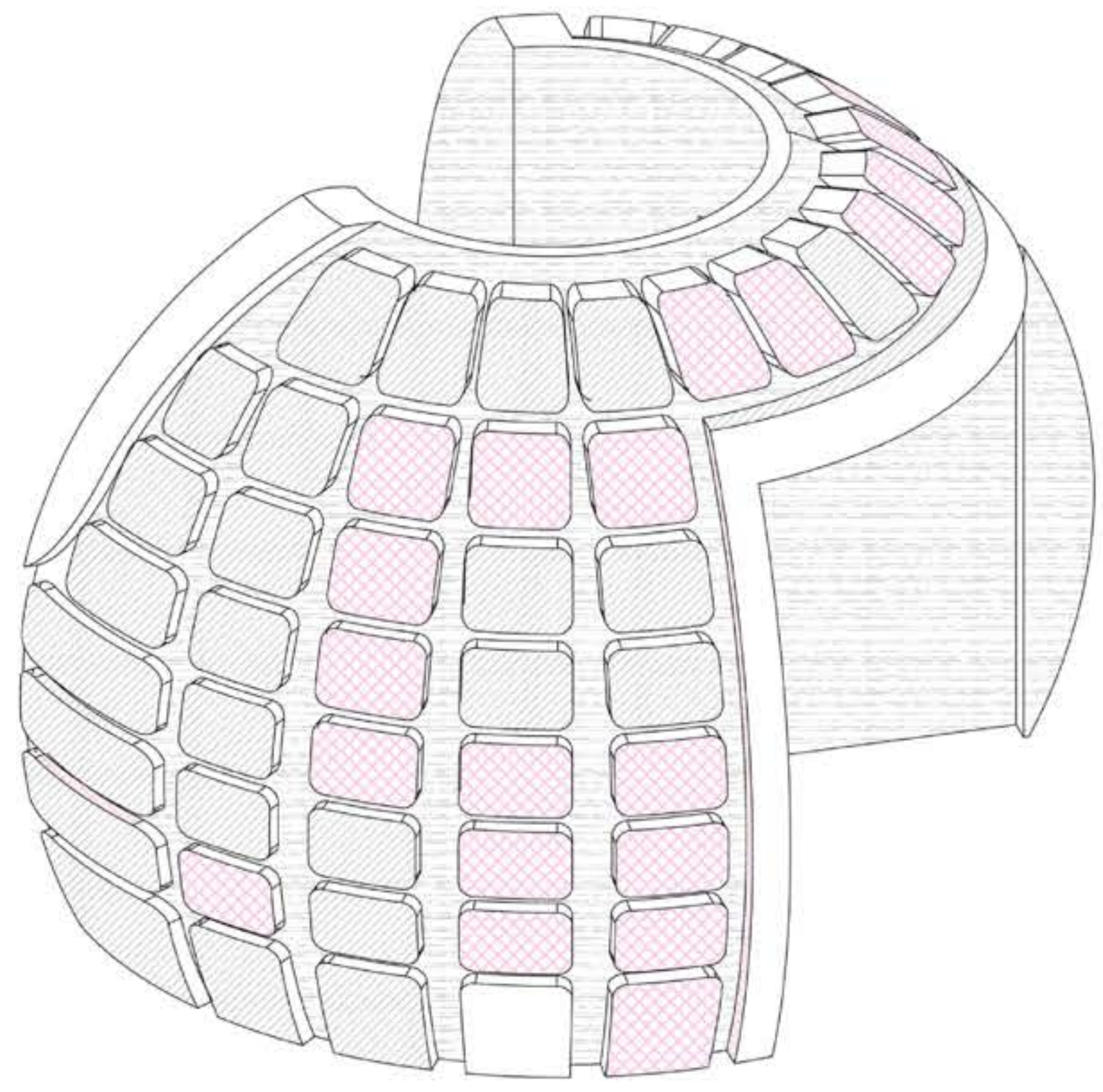




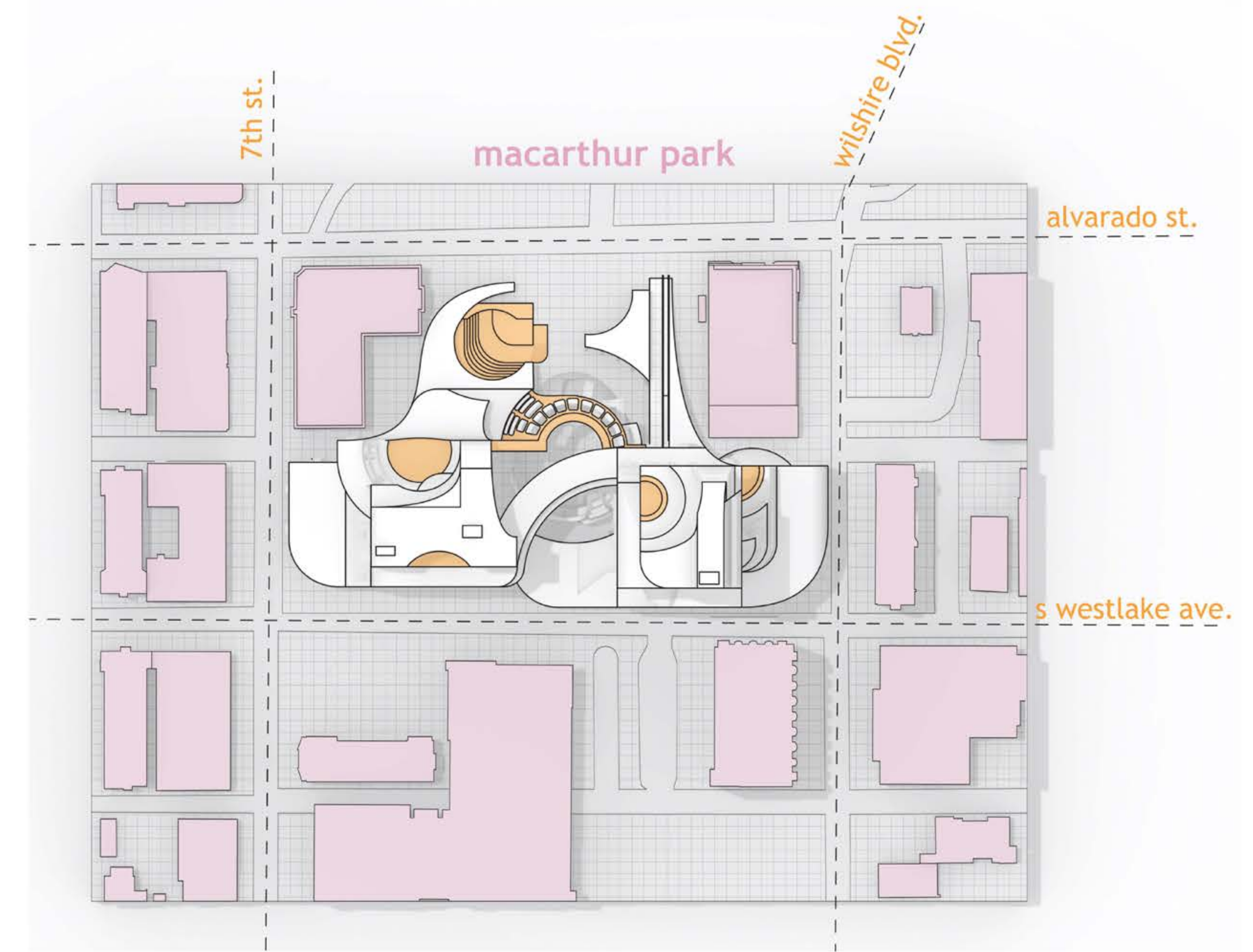
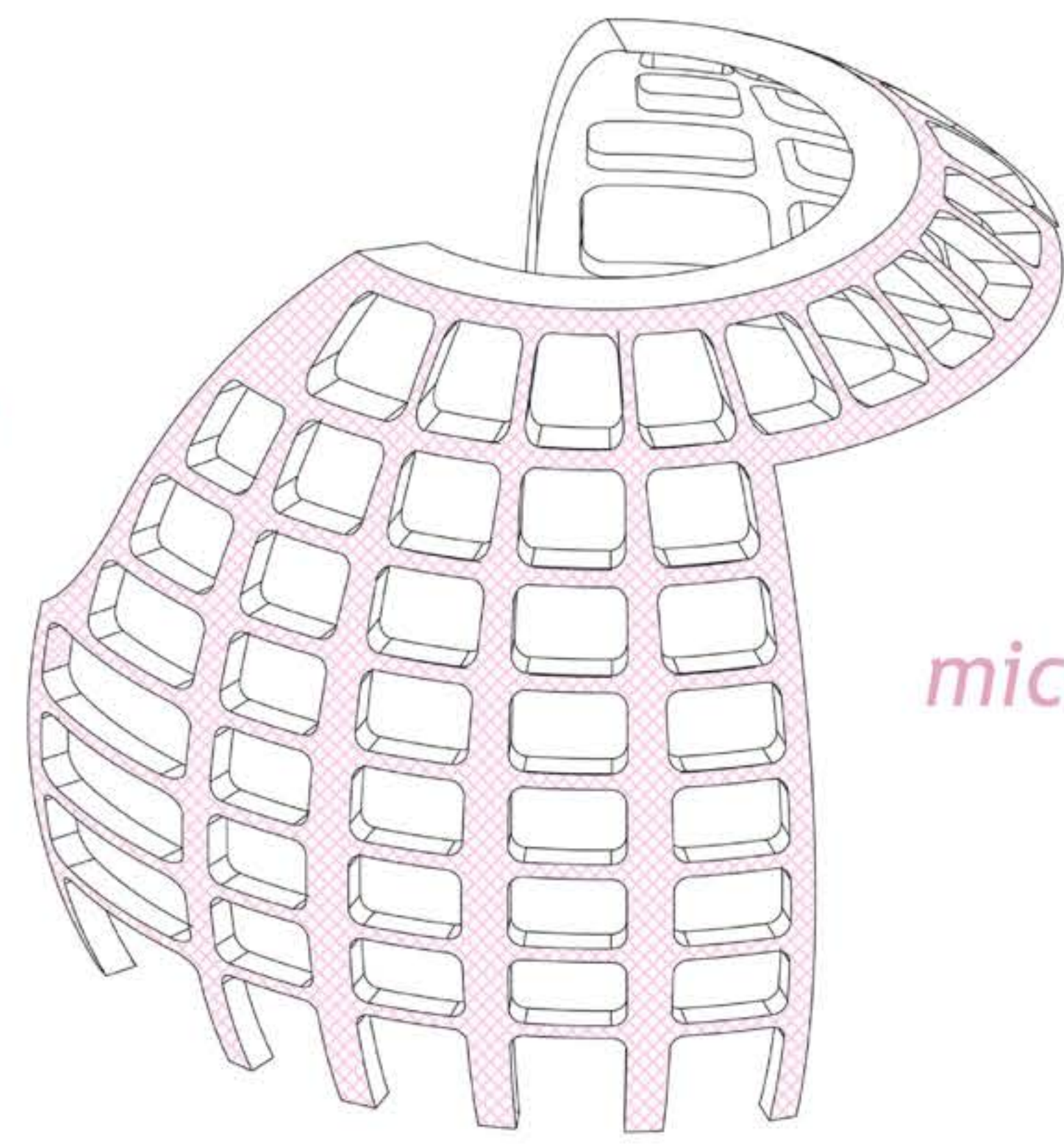




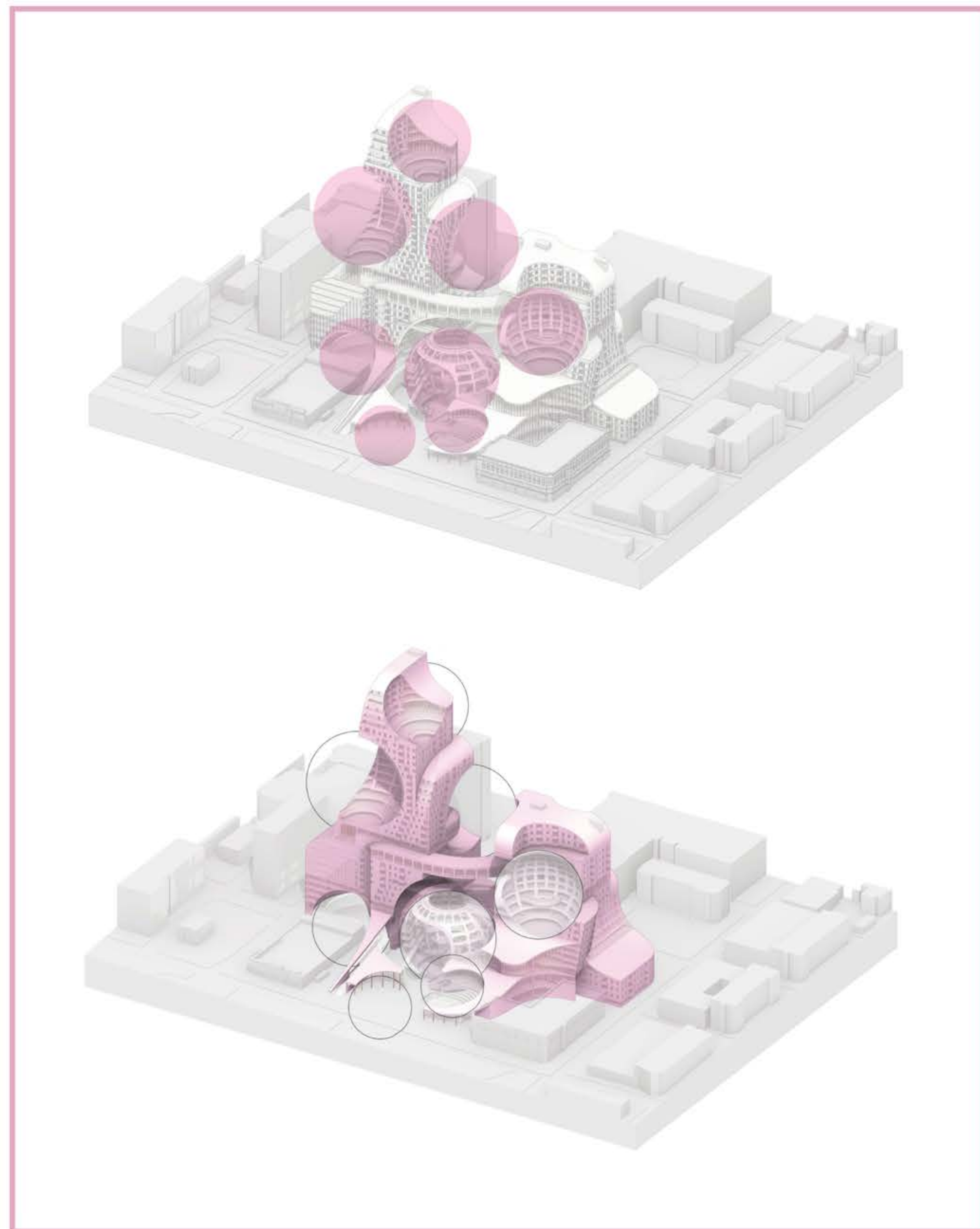
macro gaps



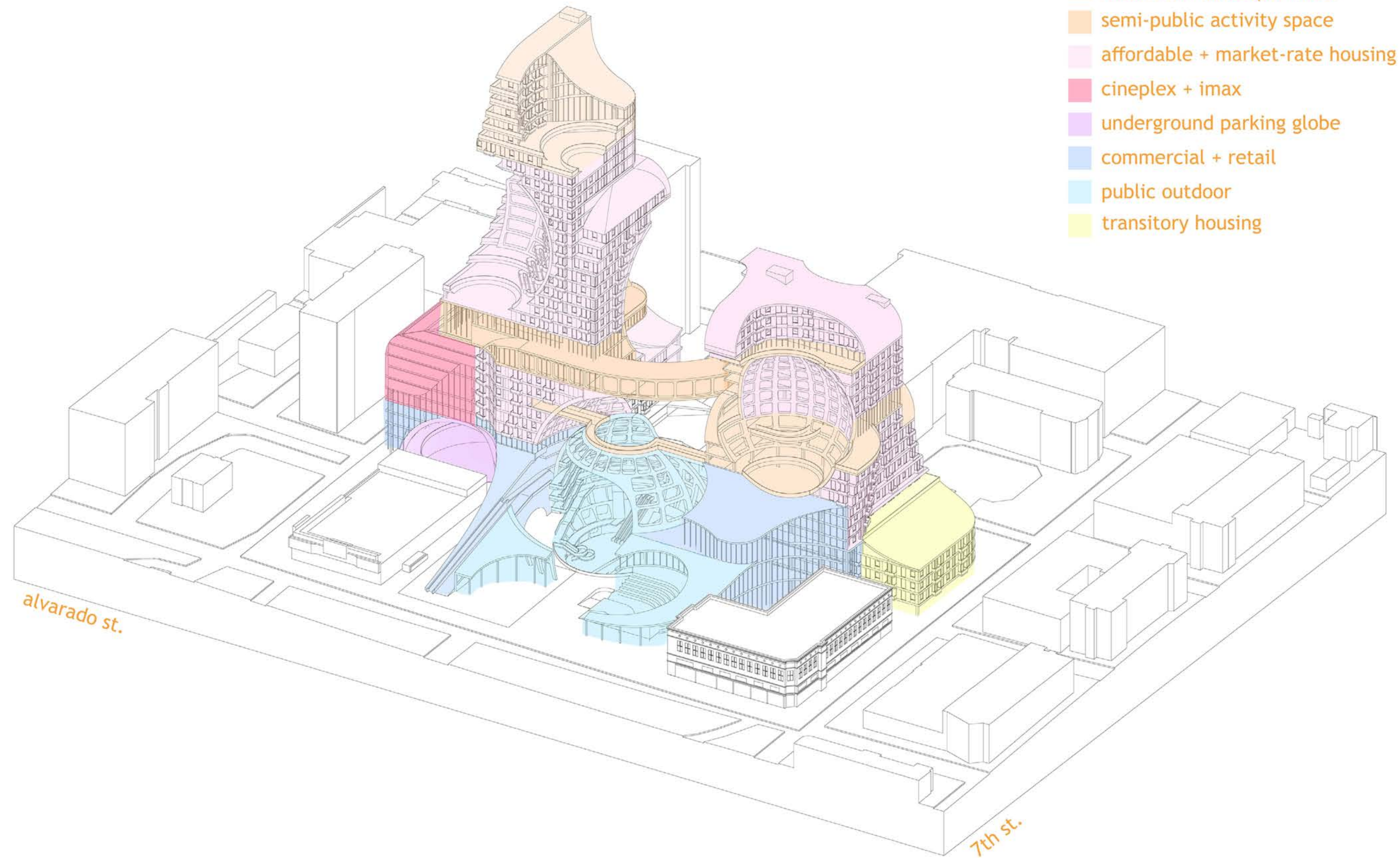
micro gaps



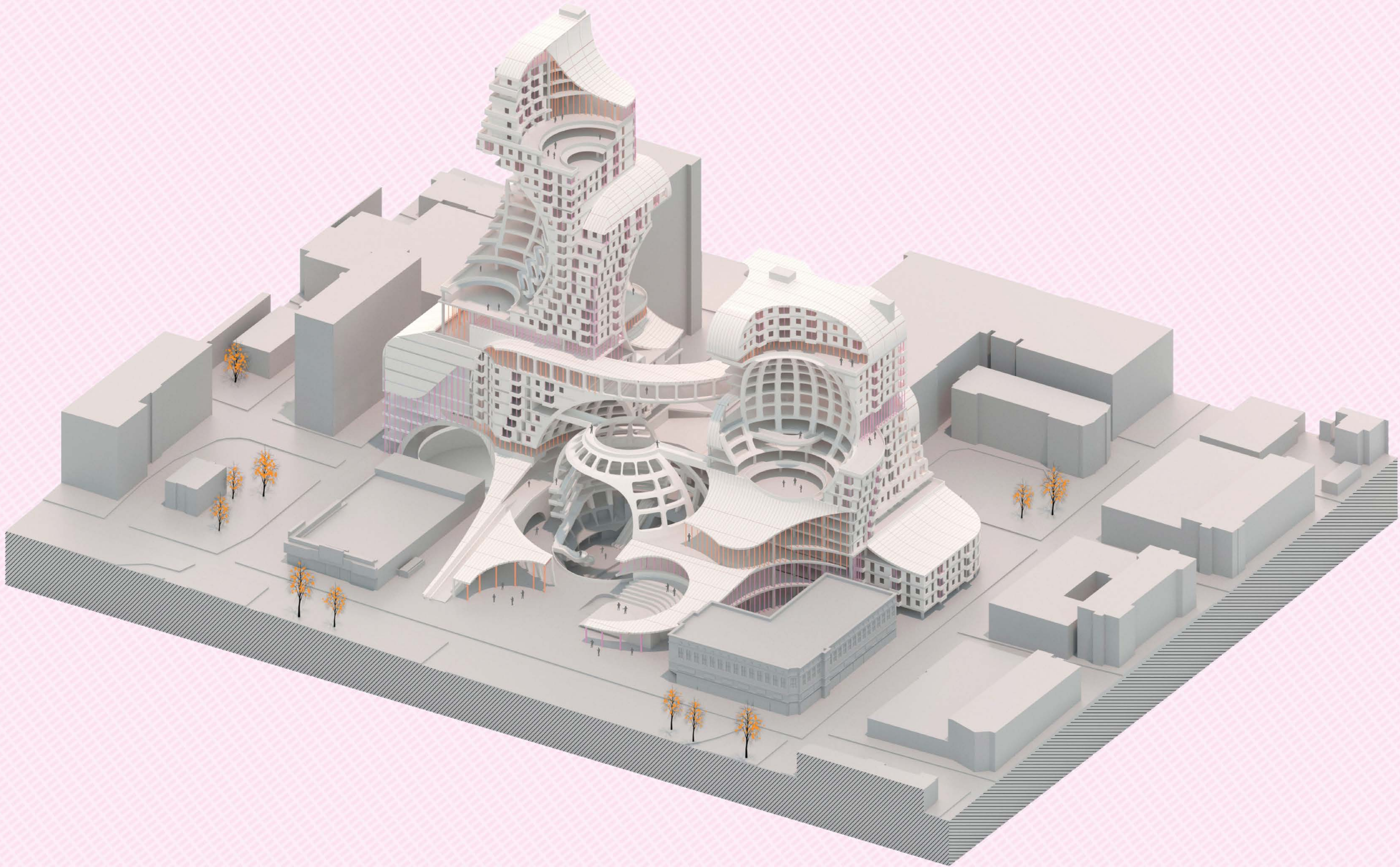
globeing and glueing



- transient + boutique hotel
- semi-public activity space
- affordable + market-rate housing
- cineplex + imax
- underground parking globe
- commercial + retail
- public outdoor
- transitory housing

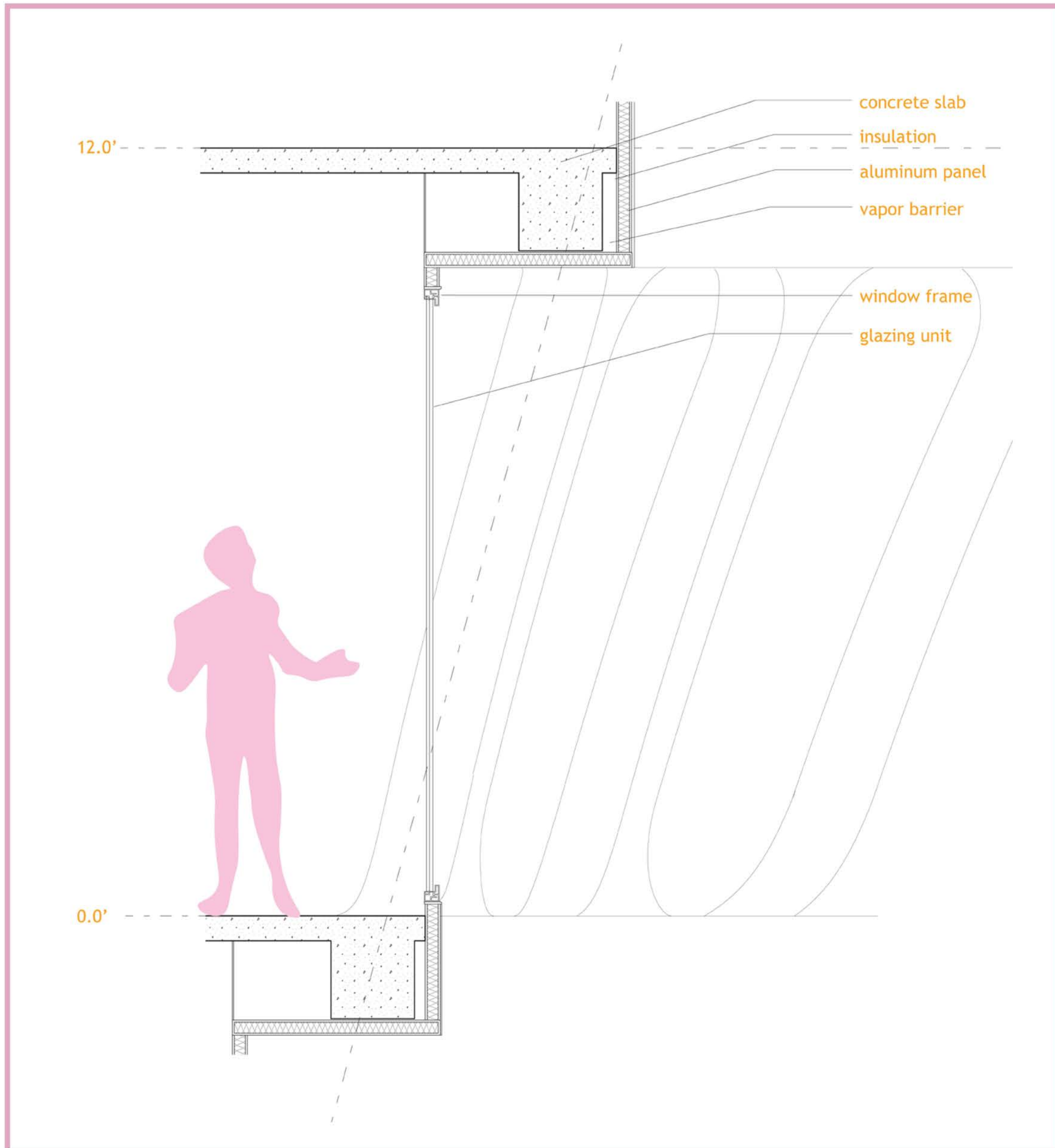




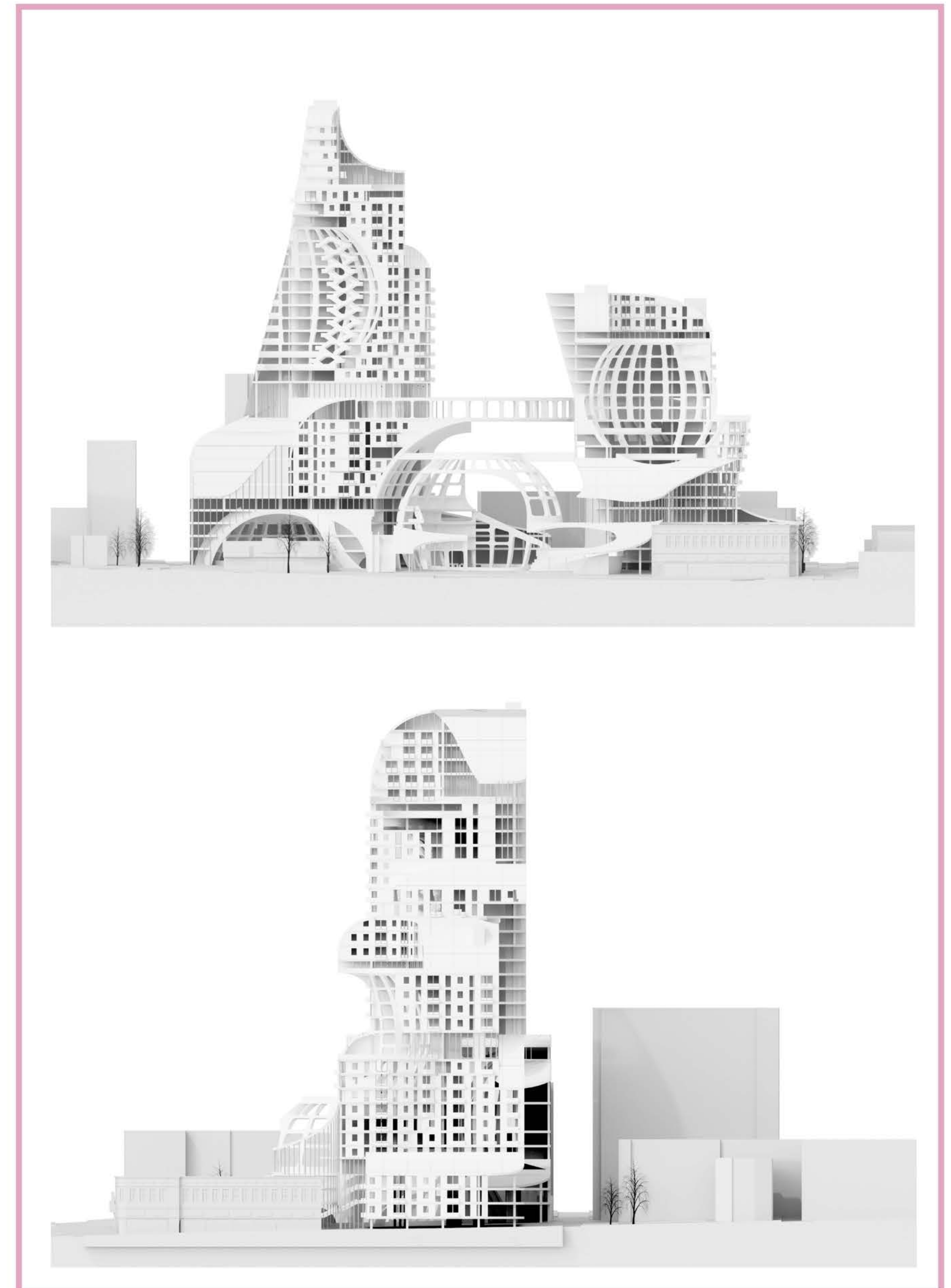




*globe wall section*



*front and side elevations*



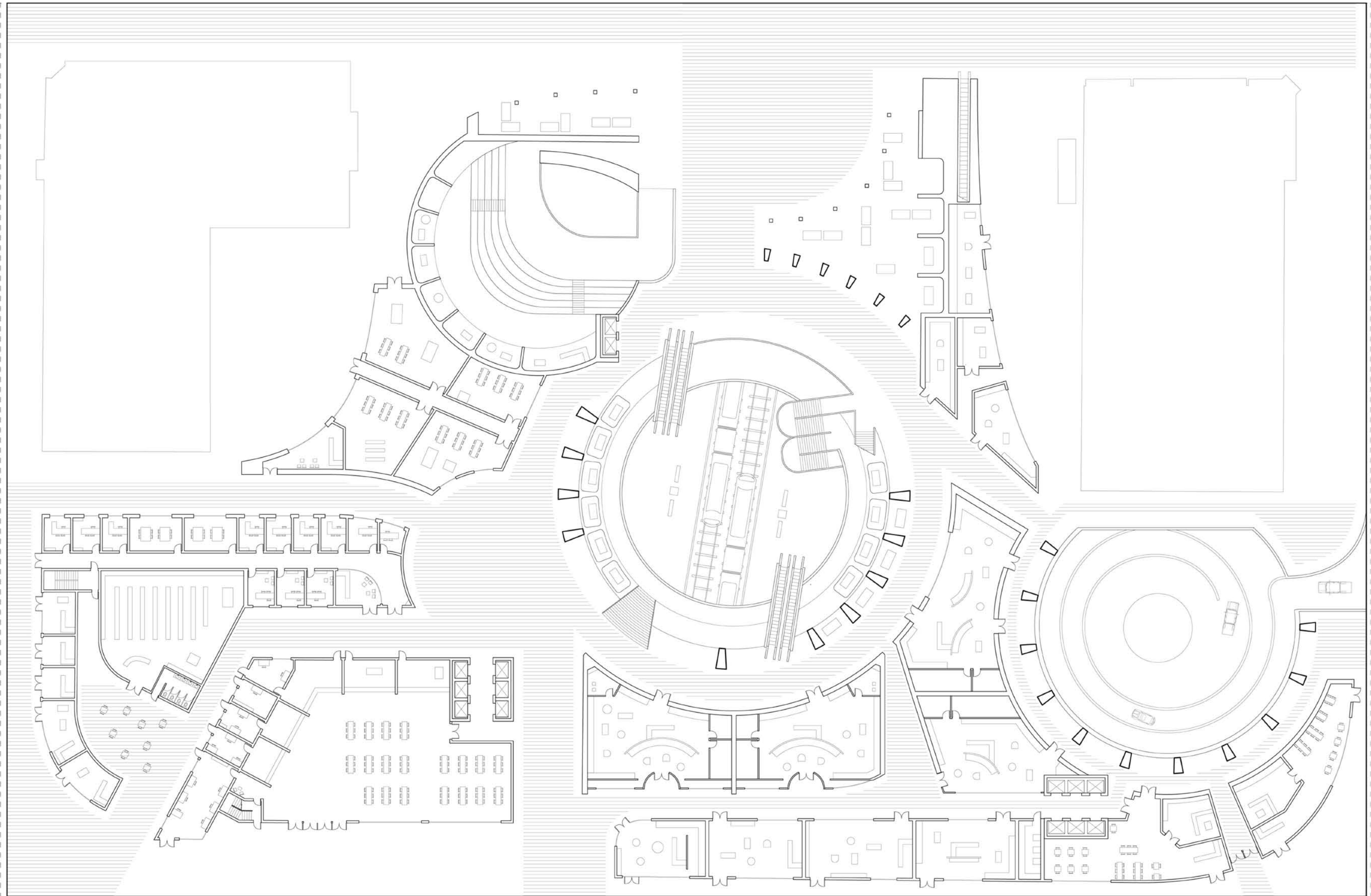


# ground floor plan

alvarado st.

7th st.

wilshire blvd.



s westlake ave.

scale: 1/16" = 1' - 0"





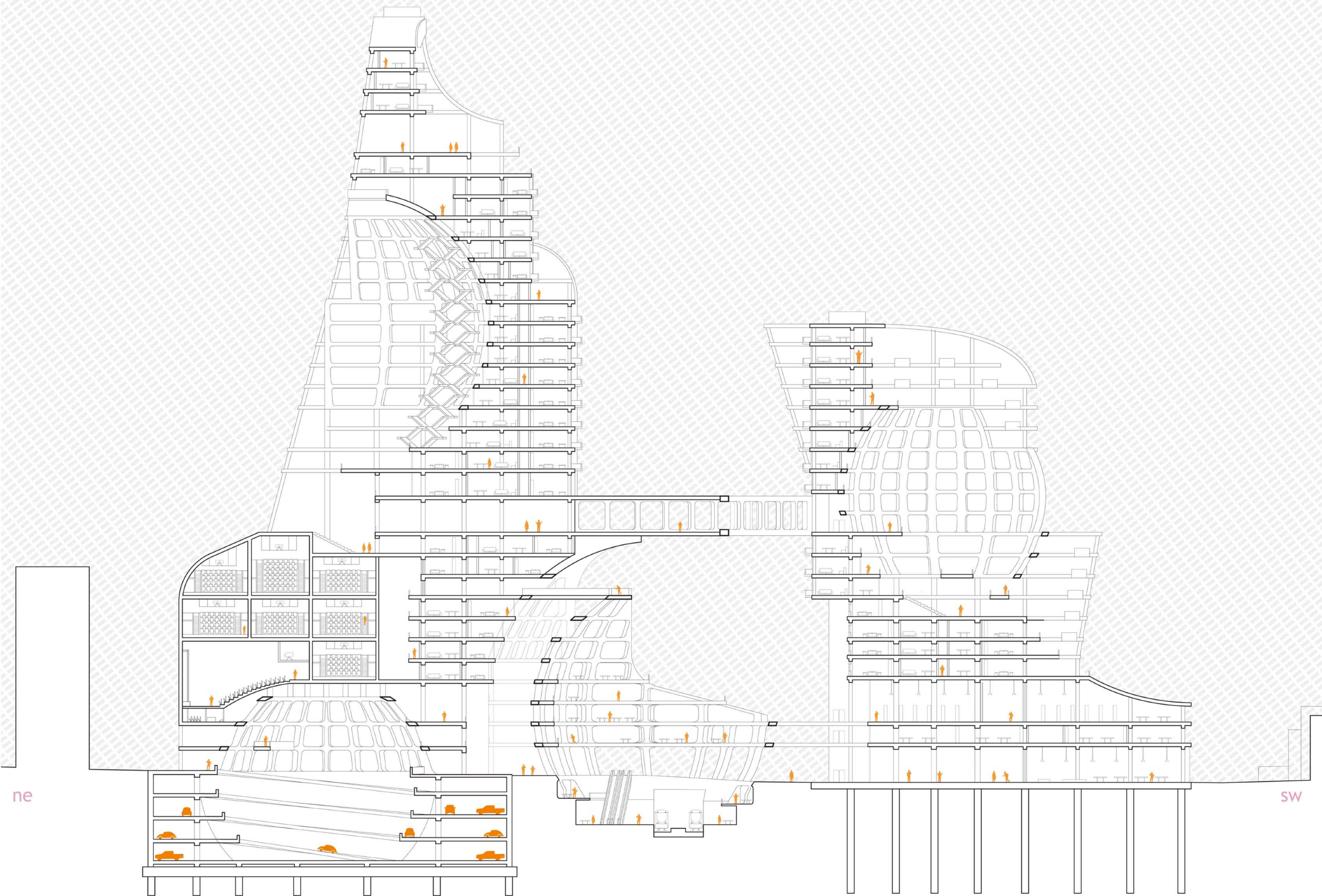
housing floor plan  
level 16



scale: 1/8" = 1' - 0"



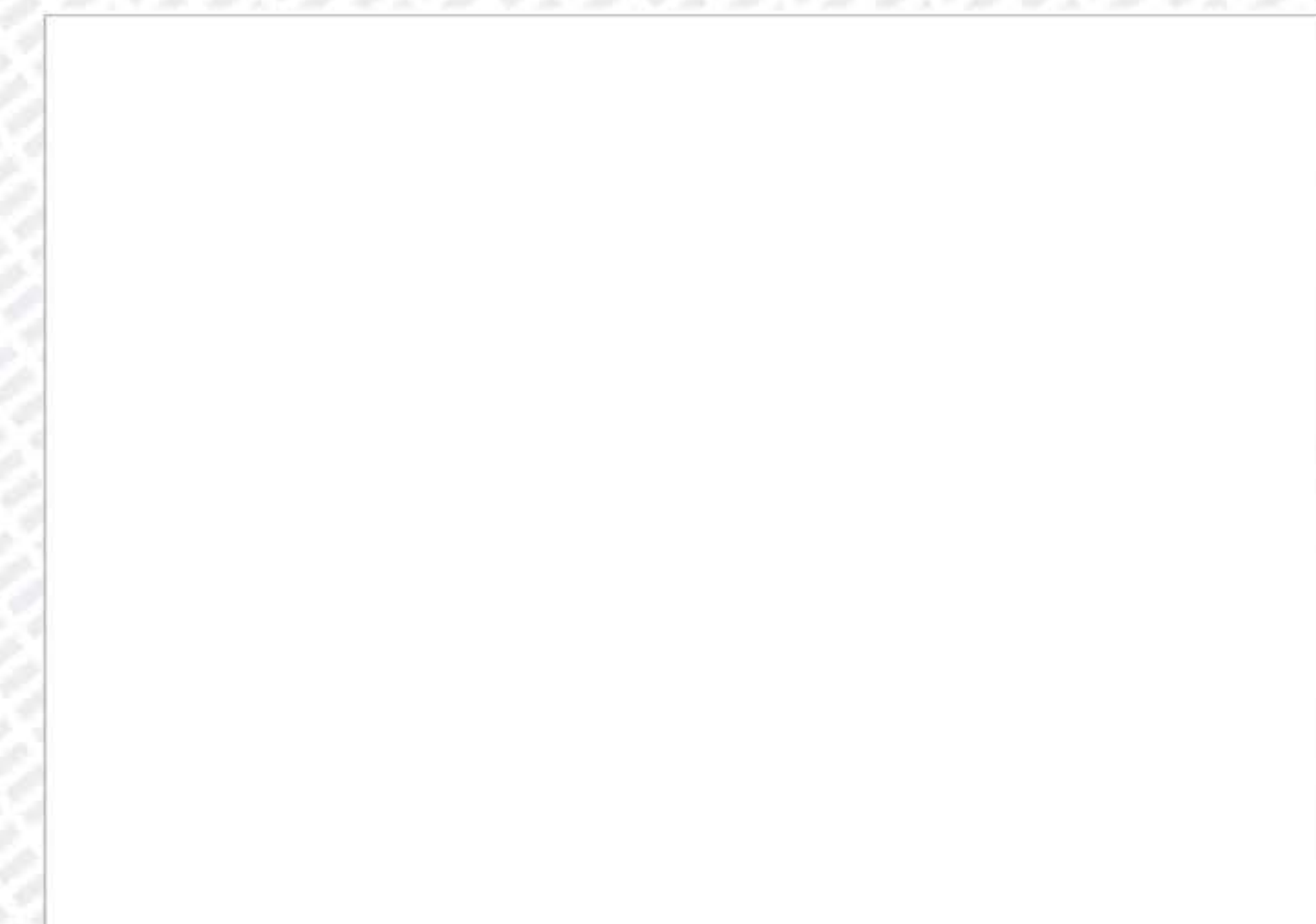
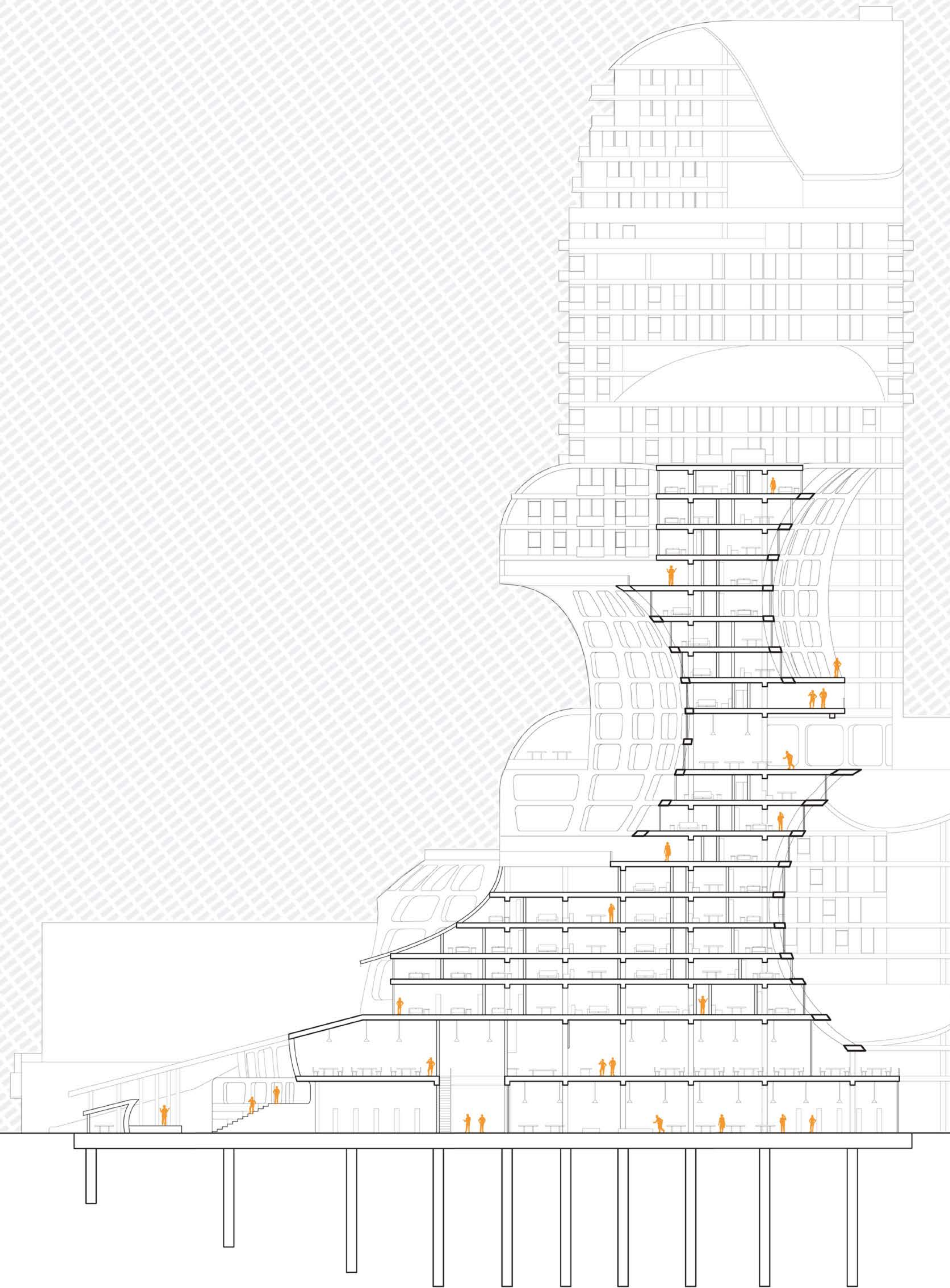




ne

SW



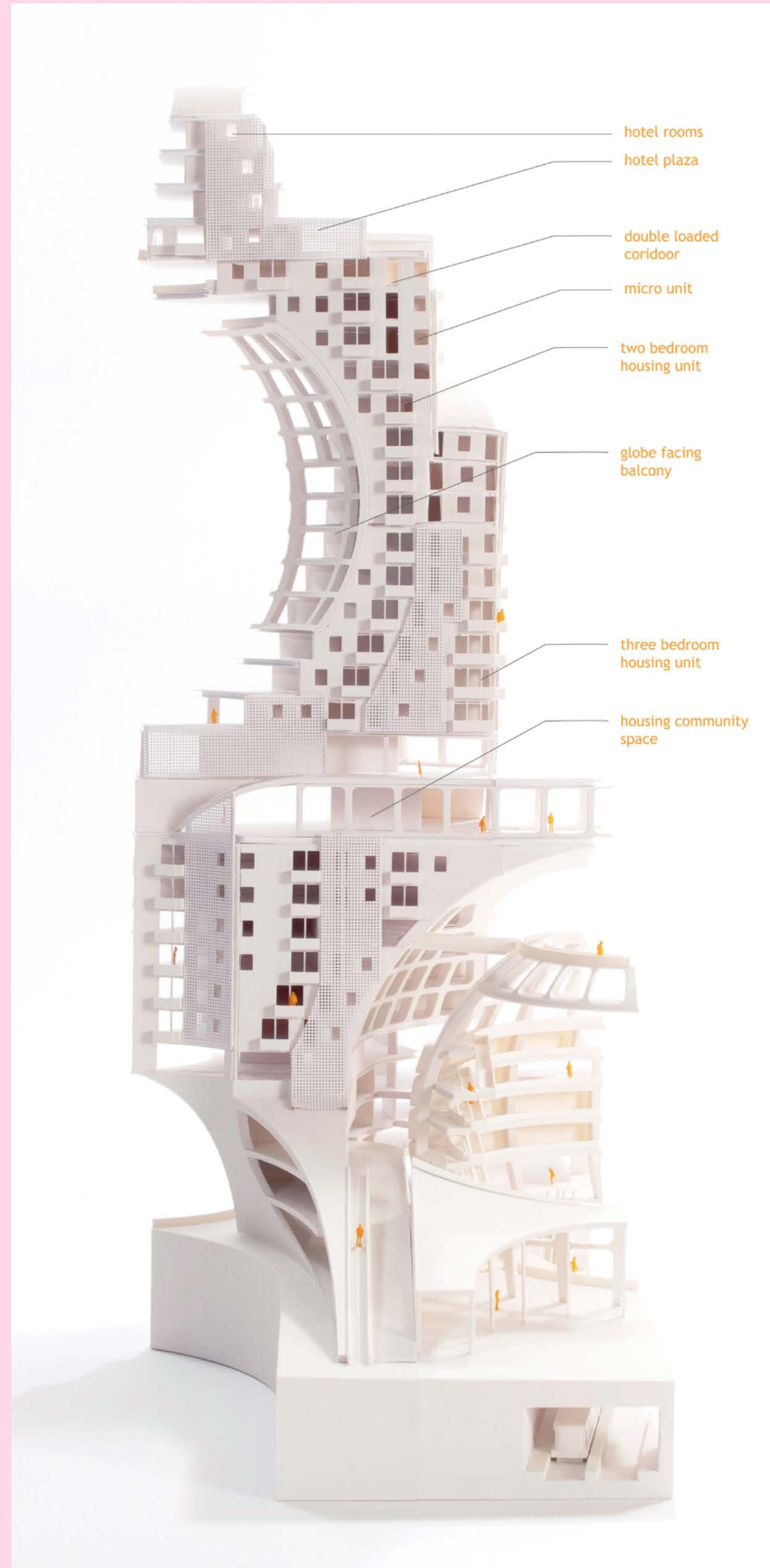
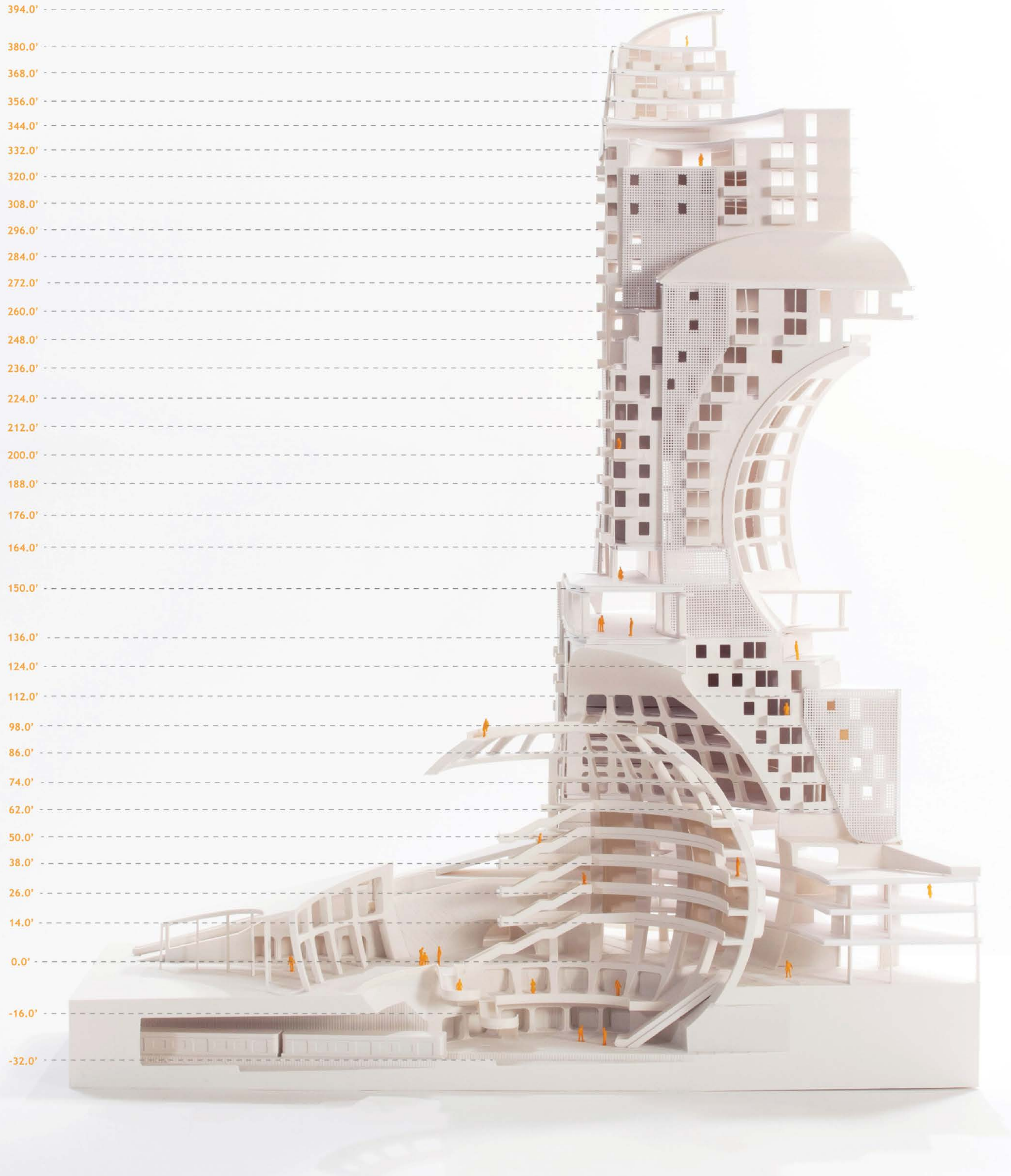


nw

se

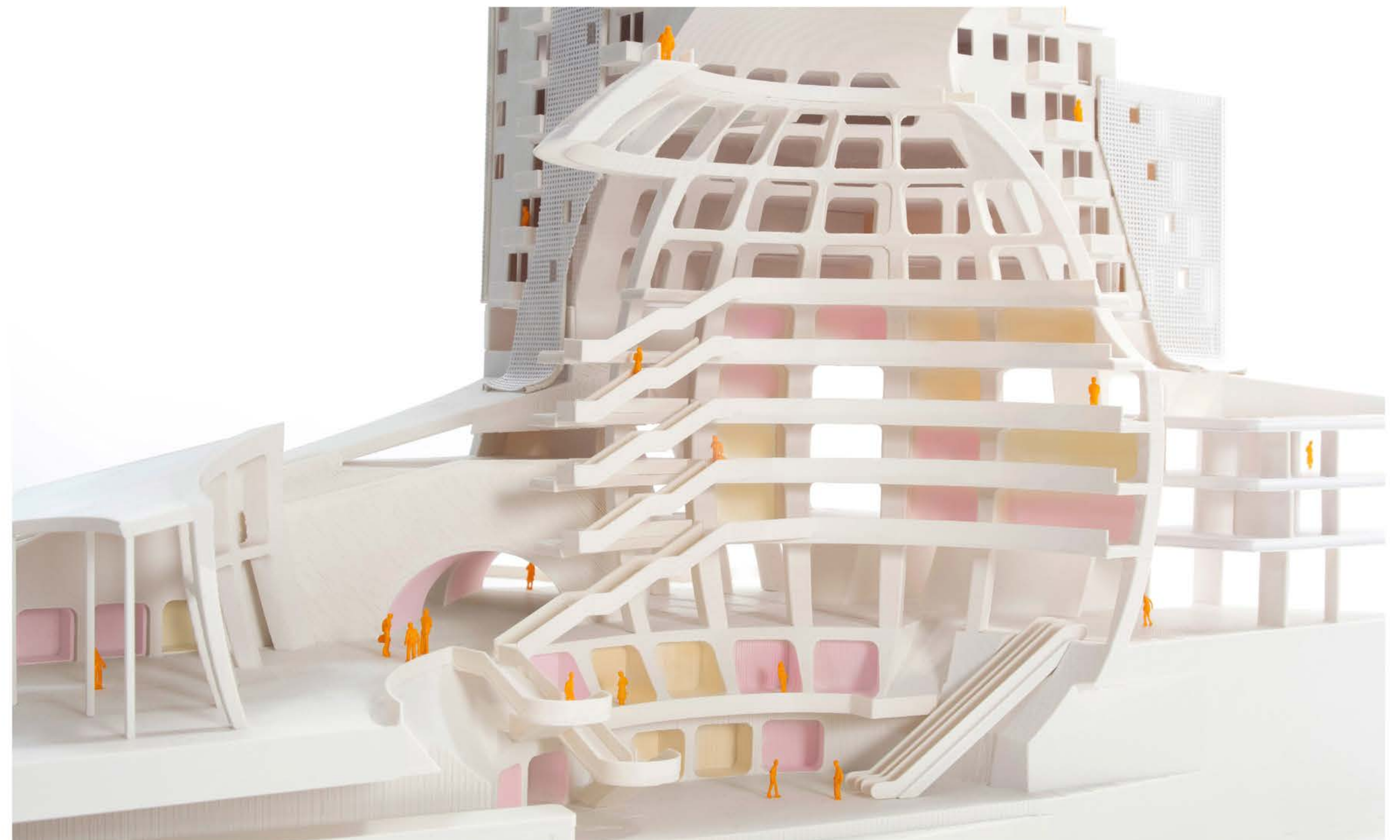
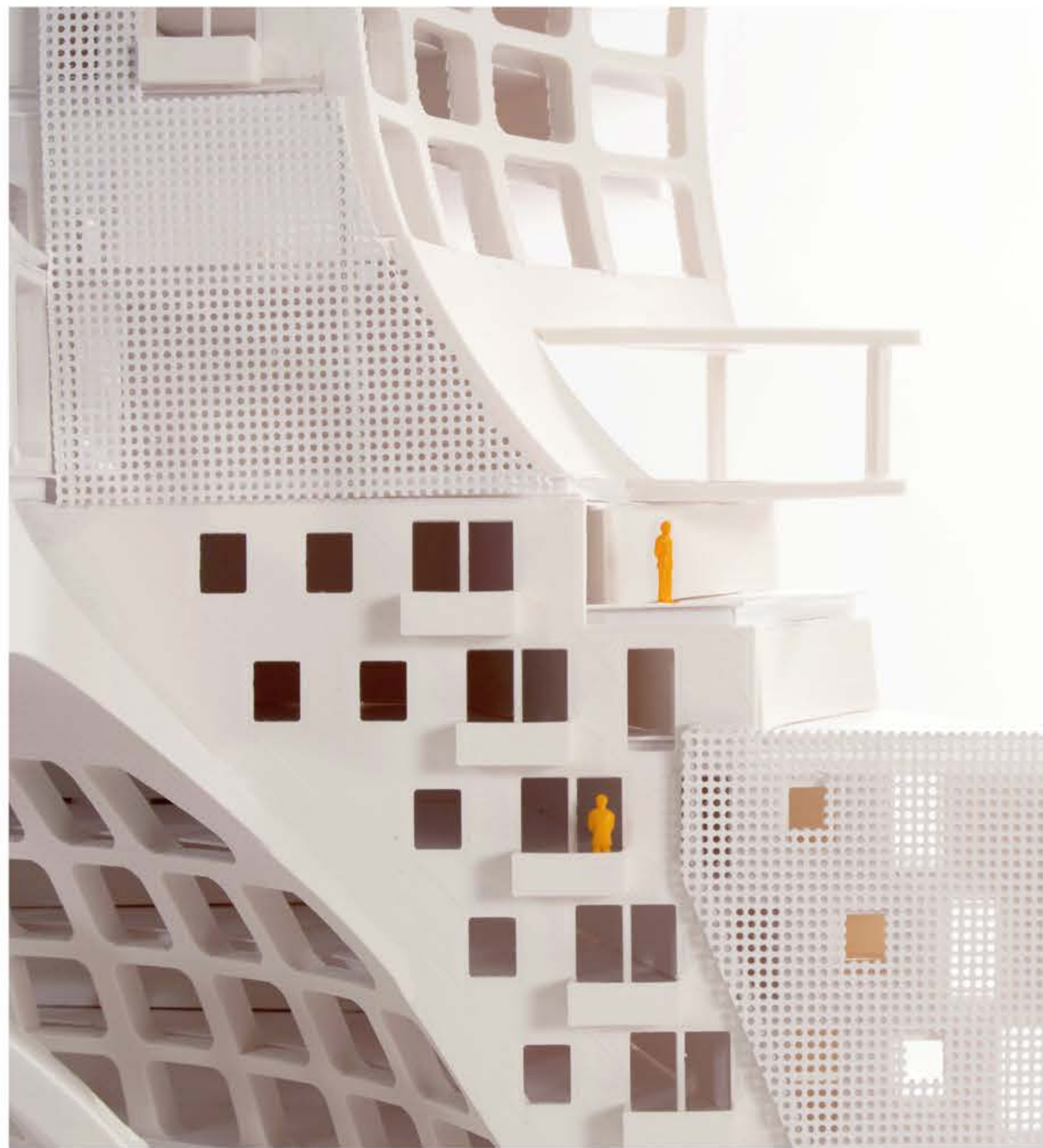


# metro section chunk





*facade elevations*



*central globe for public market*





globes  
gaps  
glues

kyle boyd  
*la metro 2022*