



"FRACTURE AND CONNECTIVITY"

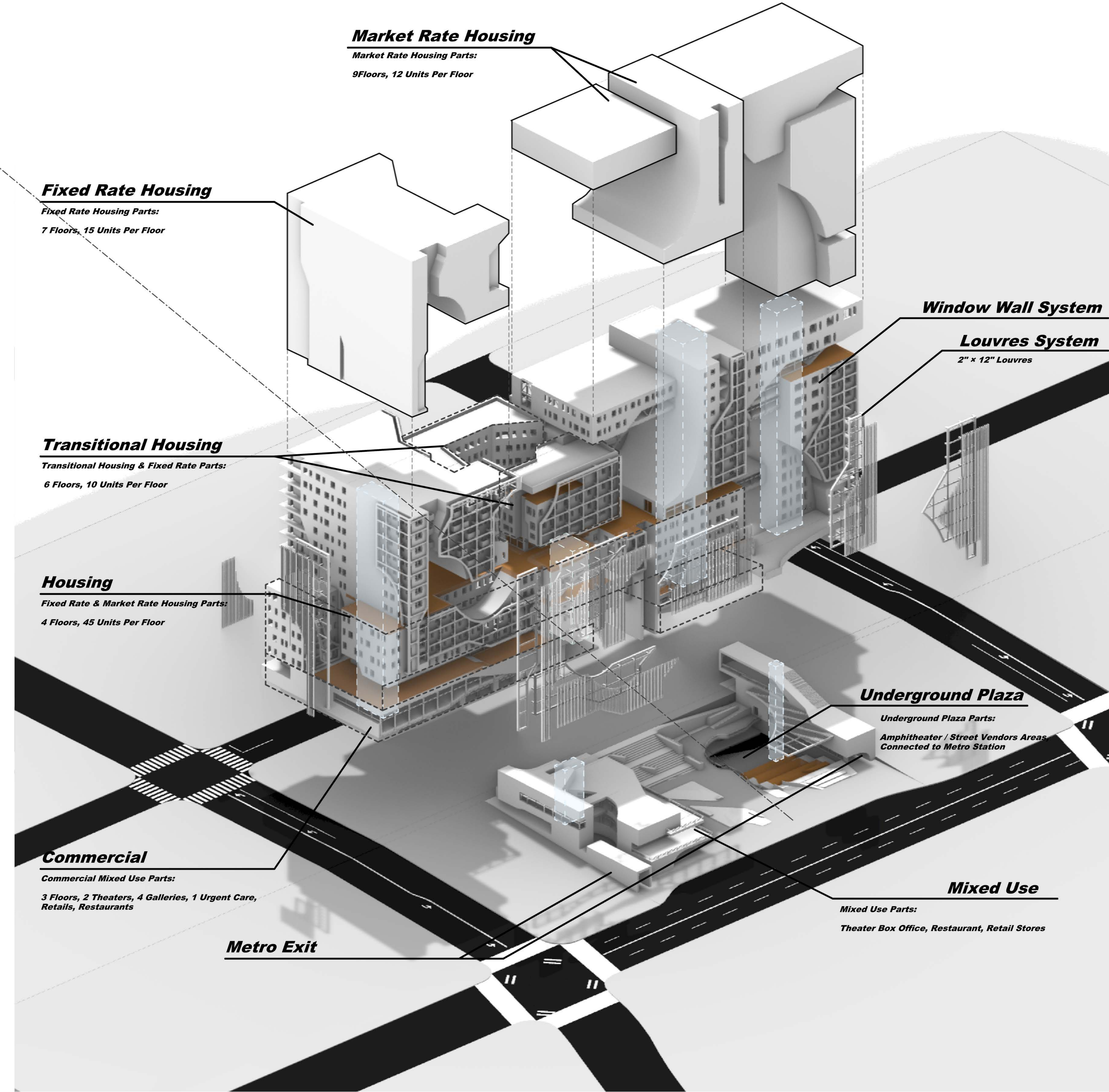
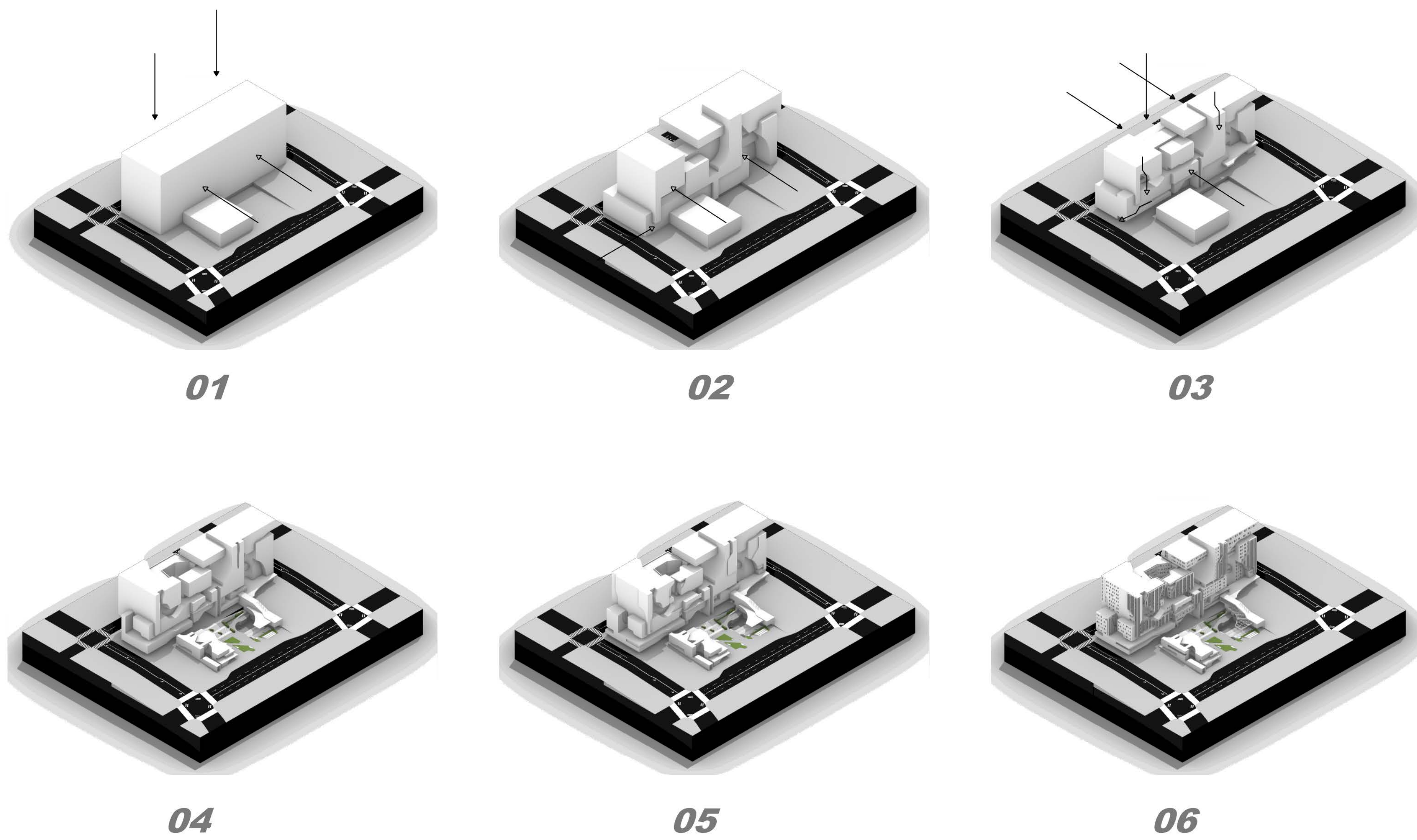
Mixed Use housing building, serving the surrounding diverse community with variety of housing types and public spaces, medical care. Accordingly, the massing is guided by strategic cut to transform and connect interior spaces and forms.

Site



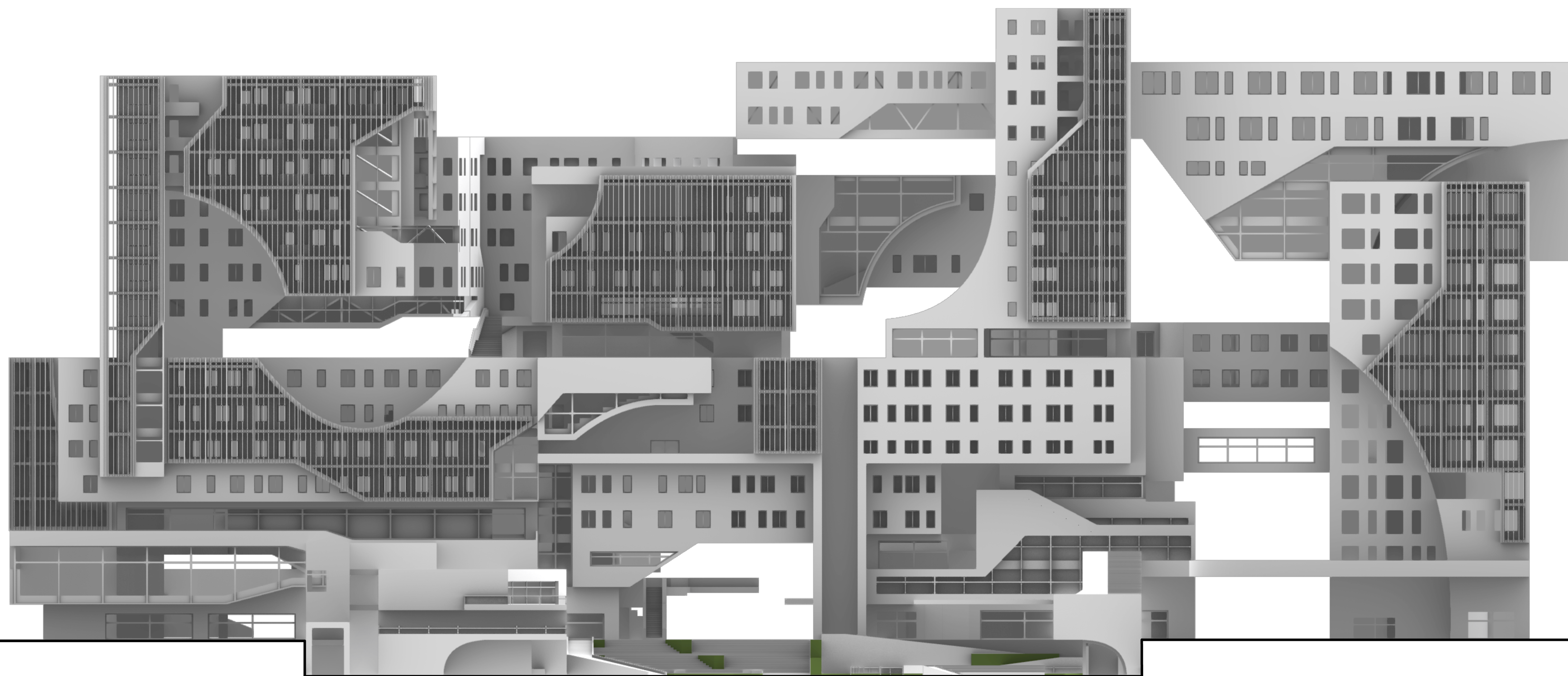
Developments

- 01 Define the Site Volume
- 02 Transforming from Dissimulation, Increasing Porosity
- 03 Creating Slits, Producing Cohesive Space between Parts
- 04 Push and Pull, increase the sunlight quality
- 05 Skin, Spaces and Forms
- 06 Facade Articulation



Diagram

Developments, Exploded Axo & Program Organization



Elevation

Elevation Looking From Mac Arthur Park

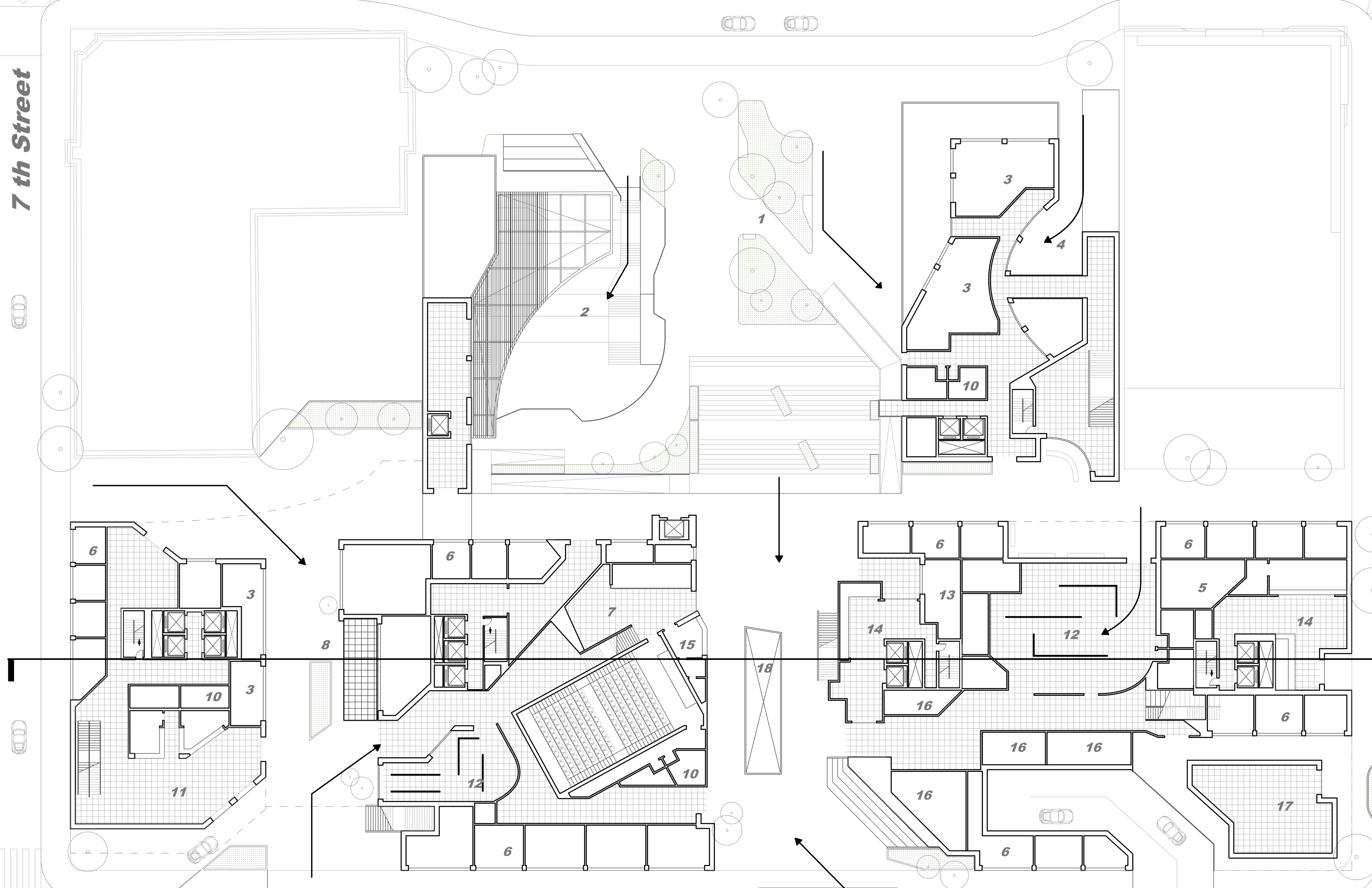
S Alvarado St.

7 th Street

Wilshire Blvd.

Westlake Blvd.

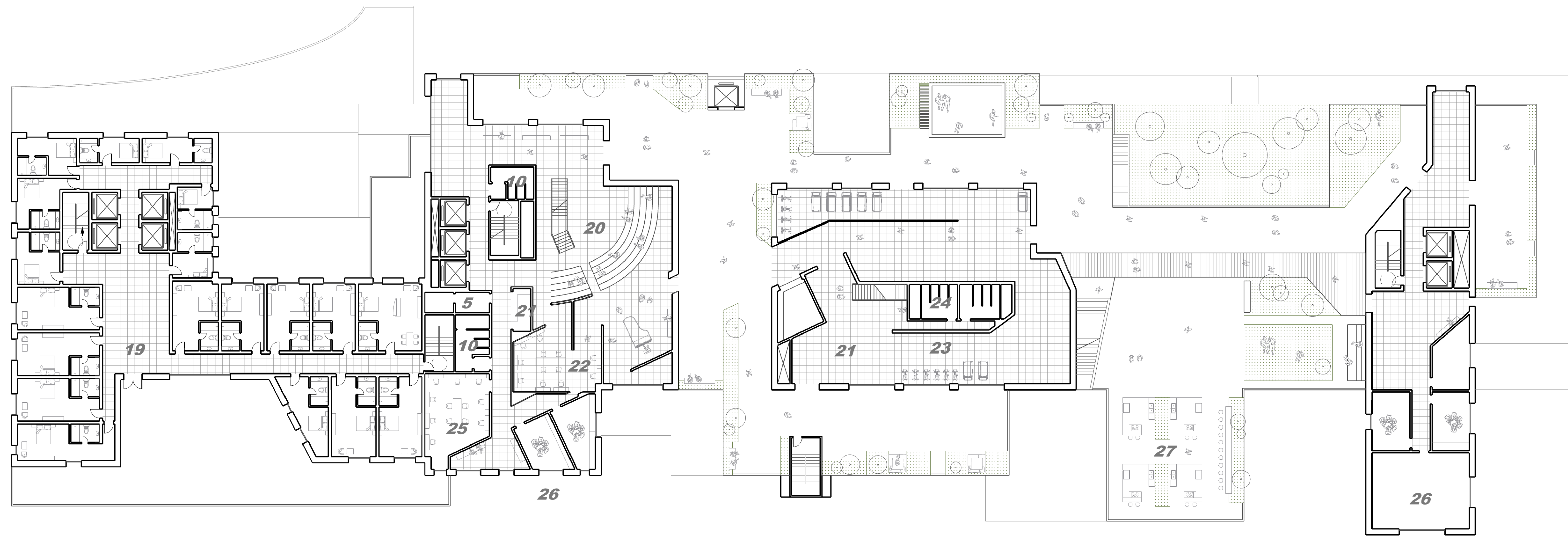
North



Site Plan

Program

- 1. Entry Plaza
- 2. Open Plaza for Street Vendors / Amphitheater
- 3. Restaurant
- 4. Food Plaza
- 5. Storage
- 6. Retails
- 7. Waiting Lobby for Theater
- 8. Open Plaza
- 9. Theater Store
- 10. Restroom
- 11. Hotel Lobby
- 12. Gallery
- 13. Cafe
- 14. Residential Lobby
- 15. Box Office
- 16. Indoor Retails
- 17. Urgent Care
- 18. Atrium



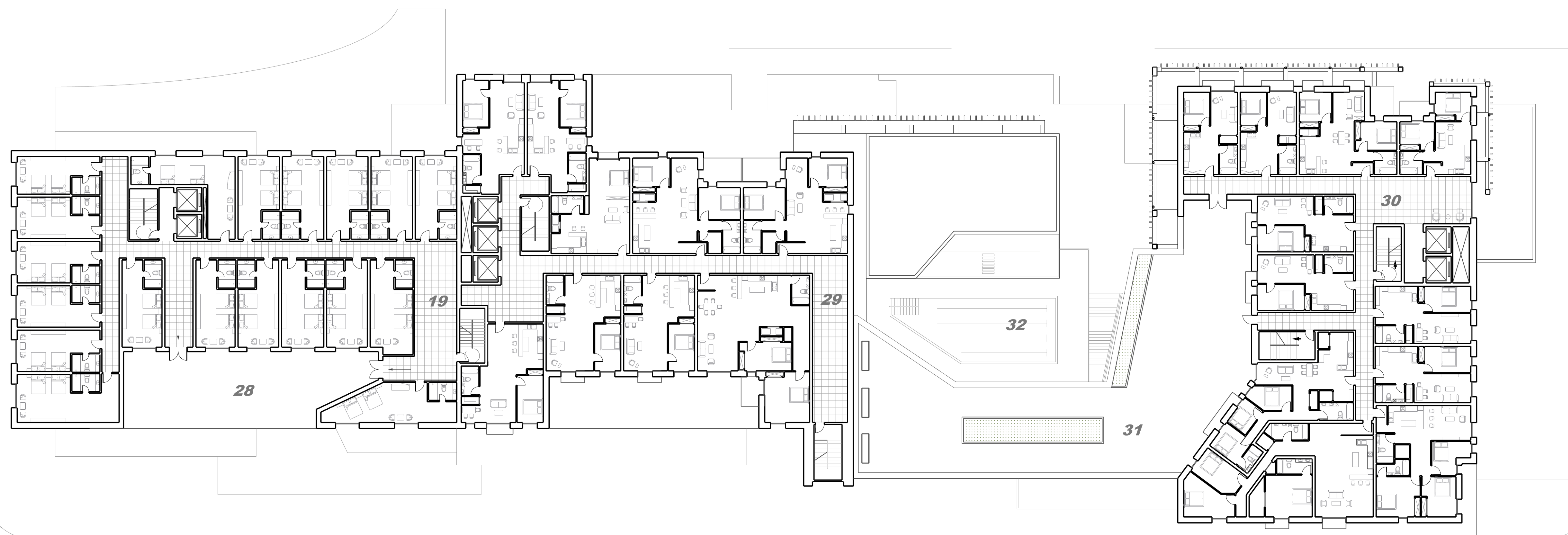
9th Floor
Amenities Floor

Program

- | | |
|--------------------|--------------------|
| 5. Storage | 25. Study Room |
| 10. Restroom | 26. Activity Room |
| 19. Hotel | 27. Outdoor Dining |
| 20. Library | |
| 21. Reception | |
| 22. Service Center | |
| 23. Gym Bathroom | |
| 24. Gym | |

Mixed Use: Residential, Hotel, Retail, Public Spaces

2022 Spring



15th Floor
Residential / Hotel

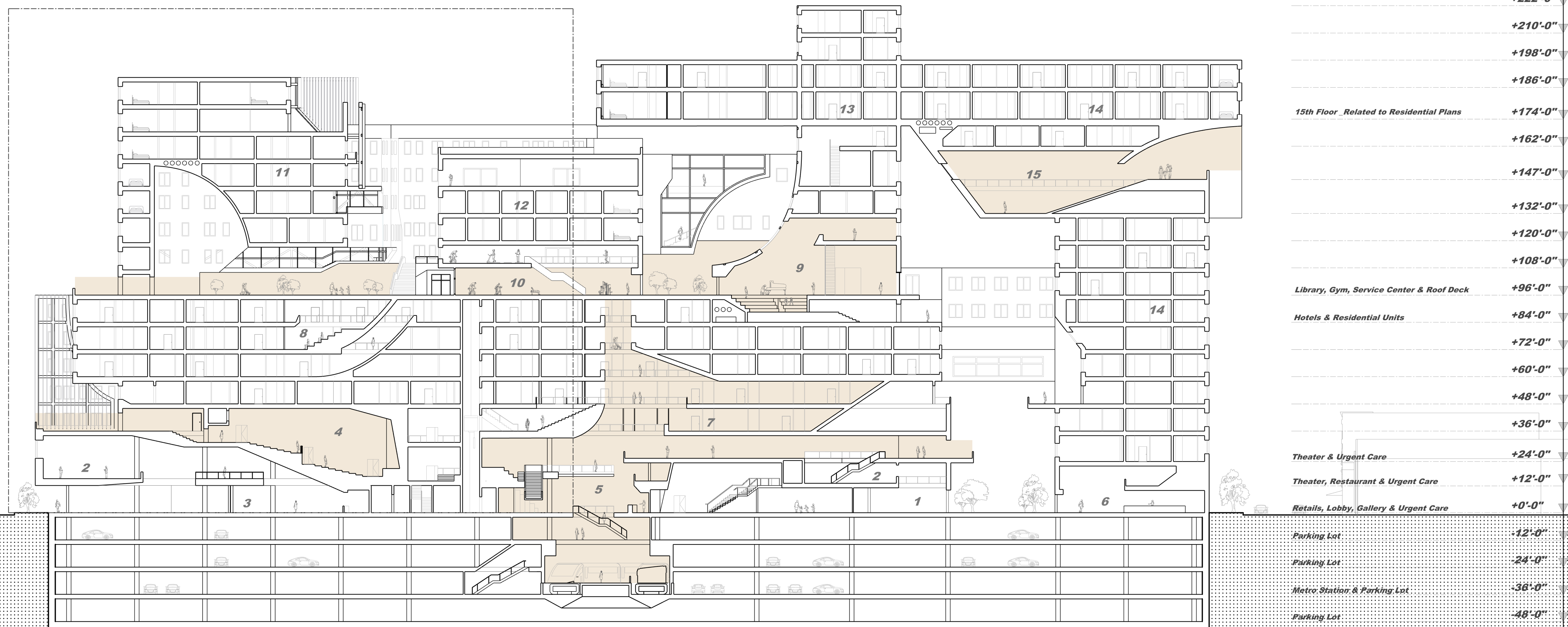
Program

- | |
|----------------------------------|
| 19. Hotel Double Room |
| 28. Hotel Roof Deck |
| 29. Market Rate Housing |
| 30. Fixed Rate Housing |
| 31. Residential Shared Roof Deck |
| 32. Swimming Pool |

Mixed Use: Residential, Hotel, Retail, Public Spaces

2022 Spring

Chunk Cut



	+222'-0"
	+210'-0"
	+198'-0"
	+186'-0"
15th Floor - Related to Residential Plans	+174'-0"
	+162'-0"
	+147'-0"
	+132'-0"
	+120'-0"
	+108'-0"
Library, Gym, Service Center & Roof Deck	+96'-0"
Hotels & Residential Units	+84'-0"
	+72'-0"
	+60'-0"
	+48'-0"
	+36'-0"
Theater & Urgent Care	+24'-0"
Theater, Restaurant & Urgent Care	+12'-0"
Retails, Lobby, Gallery & Urgent Care	+0'-0"
Parking Lot	-12'-0"
Parking Lot	-24'-0"
Metro Station & Parking Lot	-36'-0"
Parking Lot	-48'-0"

Longitudinal Section

- ### Program
- | | |
|------------------------------------|---------------------------|
| 1. Retails | 9. Library |
| 2. Restaurants | 10. Gym |
| 3. Gallery | 11. Fixed Rate Housing |
| 4. Theater | 12. Transitional Housing |
| 5. Atrium | 13. Market Rate Housing' |
| 6. Hotel Lobby | 14. Hotel |
| 7. Acitivity Space for Residential | 15. Hotel Amenities Space |
| 8. Small Amphitheater | |



**Physical Model
Pictures**